

# HİDROLİK SİLİNDİR

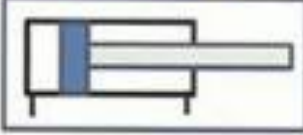
## HYDRAULIC CYLINDER

NHS SERİSİ HİDROLİK SİLİNDİRLER YÜKSEK BASINÇ ve AĞIR HİZMETE UYGUN SİLİNDİRLERDİR

H8 HİDROLİK BORU /70 m KROM KAPLI MIL İSTEĞE BAĞLI KONTROLLÜ veya KONTROLSUZ FRENLEME

MAX 315 BAR

CETOP R 58 H



NHS

SİLİNDİR ÇAPİ Ø
PİSTON DİAMETER Ø
40
50
63
80
100
125
160
200

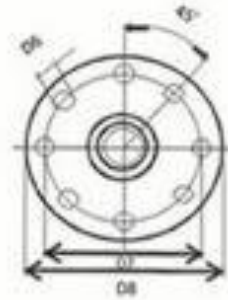
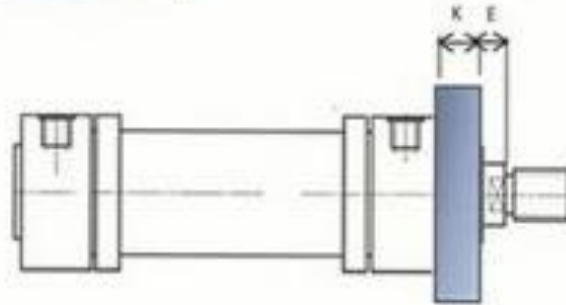
MİL ÇAPLARI Ø							
22	28	36	45	56	70	90	110

BAĞLANTI ŞEKİLLERİ / MOUNTINGS	
ÖFB	Ön Flanş Bağ / Front Flange Mounting
AFB	Arka Flanş Bağ / Rear Flange Mounting
AEB	Arka Eklm Bağ / Rear Spherical Flange Mount
AEBK	Rulmanlı Arka Eklm Rear spherical flange mounting with spherical bearing
ÖEB	Ön Eklm Bağlantı / Piston rod spherical Mounting
ÖEBK	Küresel Ön Eklm Bağlantı Piston Rod spherical Mounting with spherical bearing
ÖTMB	Orta Eklm Bağlantı / Central trunnion Mounting
AB	Ayak Bağlantı / Feet Mounting

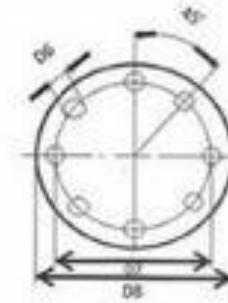
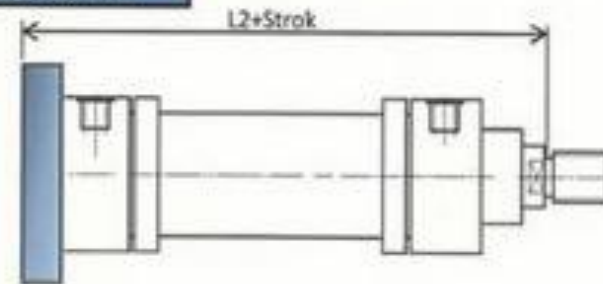


**hp****hidropnömak**CE  
ISO 9001**ÖN FLANŞ BAĞLANTI**

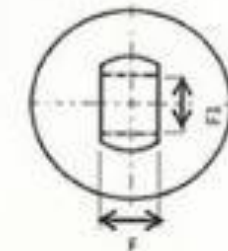
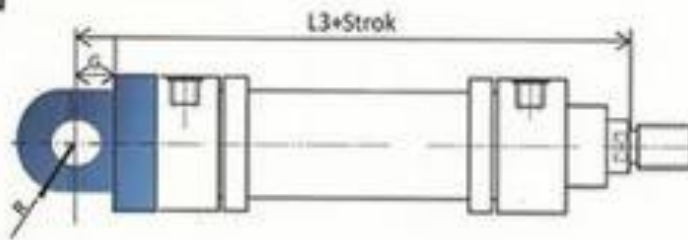
ÖFB

**ARKA FLANŞ BAĞLANTI**

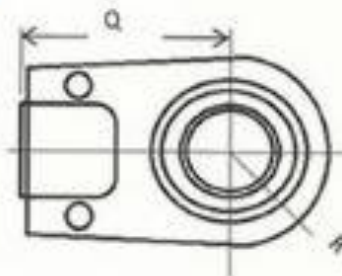
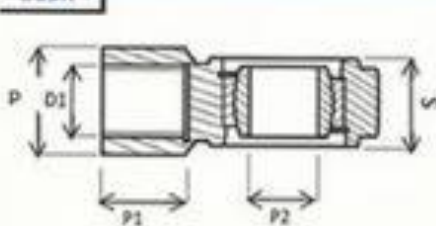
AFB

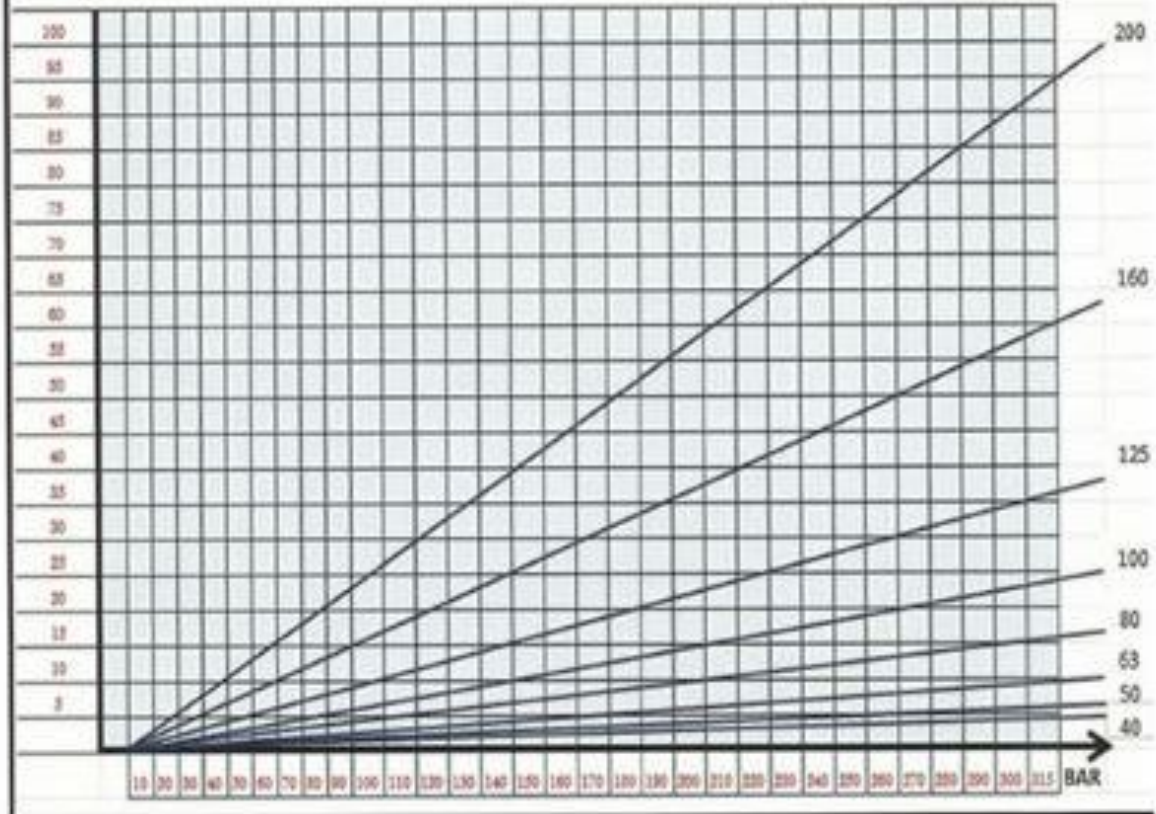
**ARKA EKLEM BAĞLANTI**

AEB

**ÖN EKLEM BAĞLANTI KÜRESEL RULMANLI**

ÖEBK



**hp****hidropnömak****CE**  
ISO 9001**KUVVET (TON)**

ÇALIŞMA BASINCI/Max Operated Pressure	315 bar
YAĞ/ Oil Type	mineral yağ/mineral oils
Çalışma Sıcaklığı / Temperature Range	20°C to 80°C

**ÖNEMLİ:**

KULLANIM AŞAMASINDA MAX **BASINÇ** DEĞERİNİ AŞMAYINIZ.

HİDROLİK SİSTEME **UYGUN** YAĞLAR KULLANINIZ.

HER HANGİ BİR ARIZA DURUMUNDA MUTLAKA **YETKİLİ** BİRİNE DANIŞINIZ.

HİDROLİK KEÇELER ZAMANLA ÖZELLİKLERİNİ KAYBEDECEĞİ İÇİN UYGUN **PERİYOTLARDA** DEĞİŞTİRİNİZ.

HİDROLİK SİLİNDİR MİLİNİ EZİLME , DARBE ve ÇİZİLMELERDEN **KORUYUNUZ.**