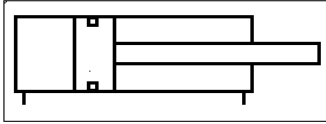


hp**hidropnömak****CE**
ISO 9001**HAVA SİLİNDİRİ****PNEUMATIC CYLINDER****h_NS / h_NSY ÇELİK GÖVDE HAVA SİLİNDİRİ****MAX 16 BAR****CETOP RP 53 P**

SIZE Ø 125-Ø 320



Ø 32 - Ø 63 MM arası 70 µ krom kaplı mil

İthal boru ve krom mil



Ø 125 - Ø 320 arası beş değişik çap

NS _.....**SİLİNDİR KOD/CYLINDER CODE**

NS / ÇİFT ETKİLİ/DOUBLE ACTİNG

NSY / ÇİFT ETKİLİ YASTIKLI
DOUBLE ACTİNG CUSHİONİNG**SİLİNDİR
ÇAPLARI
PİSTON
DİAMETER**

Ø 125

Ø 160

Ø 200

Ø 250

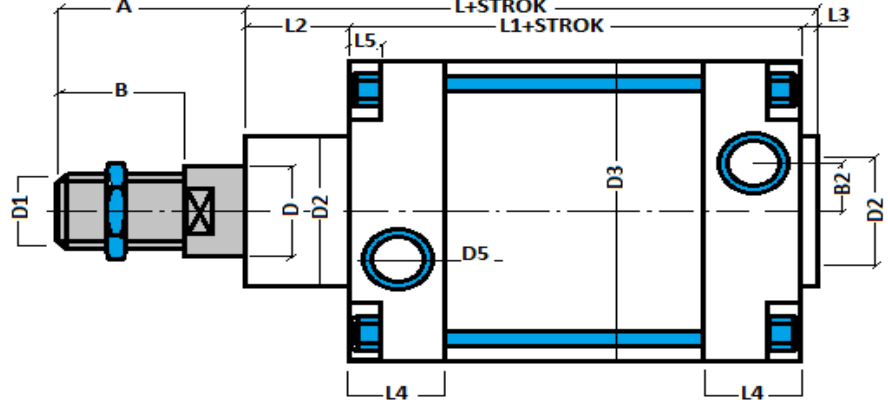
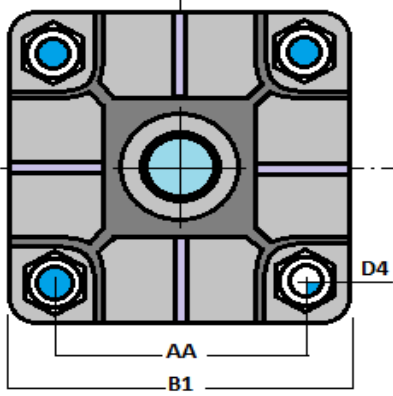
Ø 320

BAĞLANTILAR/MOUNTİNGS

FB	FLANŞ BAĞ / FRONT or REAR FLANGE MOUNTİNG
EB	EKLEM BAĞ / SWİVEL FLANGE MOUNTİNG
EYB	EKLEM YER BAĞ / SWİVEL FLANGE MOUNTİNG WITH CLEVIS FOOT
ÇB	ÇATAL BAĞ / PİSTON ROD CLEVIS MOUNTİNG
AB	AYAK BAĞ / FOOT CONNECTİON

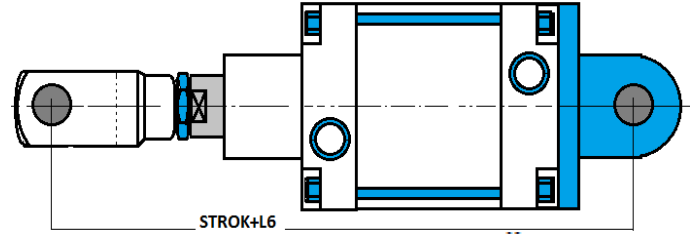
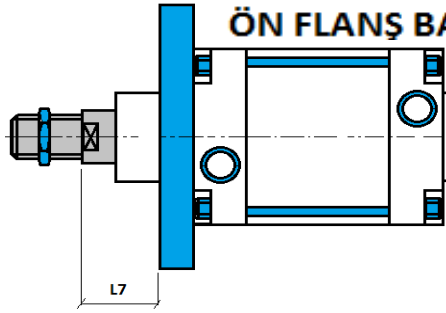
PNEUMATIC CYLINDER

h_NS / h_NSY ÇELİK GOVDE HAVA SİLİNDİRİ



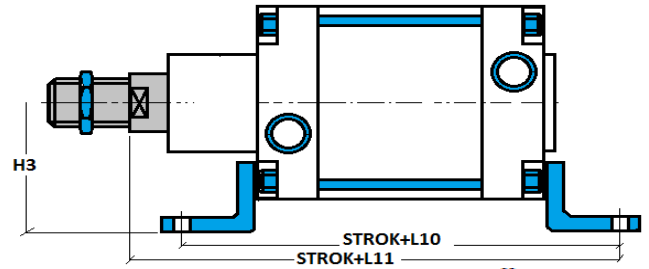
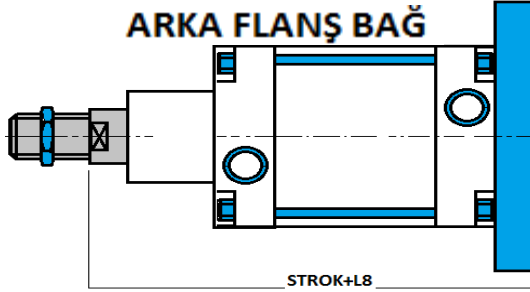
ÖN FLANŞ BAĞ

ÖN ÇATAL ARKA EKLEM BAĞ



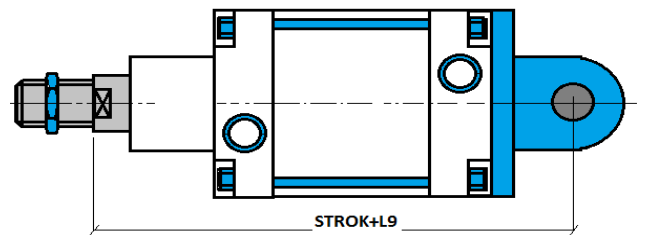
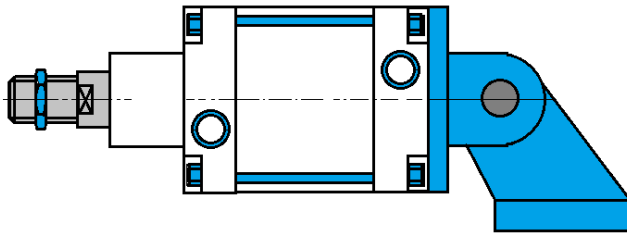
ARKA FLANŞ BAĞ

AYAK BAĞ



ARKA EKLEM YER BAĞ

ARKA EKLEM BAĞ



	AA	A	A1	A2	B	B1	B2	B3	B4	B5	C	C1	C2	C3	D	D1	D2
h-NS 125	106	70	180	220	48	140	15	130	70	90	20	55	11	25	32	M24X1,5	63
h-NS 160	135	102	230	280	72	180	22	170	90	115	22	60	13	25	45	M 36X2	80
h-NS 200	166	102	270	320	72	220	25	170	90	135	25	60	15	25	45	M 36X2	80
h-NS 250	204	114	330	390	84	270	25	200	110	165	25	70	20	25	50	M 42X2	100
h-NS 320	255	126	400	470	96	340	30	220	120	200	30	80	23	30	65	M 48X2	110

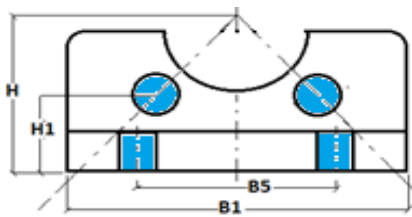
	D3	D4	D5	D6	D7	D8	D9	D10	D11	E	E1	E2	E3	E4	E5	E6	E7
h-NS 125	135	M 12	R" 1/2	25	16	25	11	25	36	82	100	50	69	50	85	60	90
h-NS 160	170	M 14	R" 3/4	30	18	35	14	32	46	116	144	70	87	65	116	88	126
h-NS 200	210	M 16	R" 3/4	30	22	35	16	32	46	116	144	70	95	70	125	90	130
h-NS 250	260	M 20	R" 1	40	26	40	20	40	60	148	168	85	105	75	153	110	160
h-NS 320	330	M 24	R" 1	45	33	50	26	40	66	169	192	90	125	85	182	122	186

	E8	E9	F	F1	F2	F3	F4	F5	H	H1	H2	H3	L	L1	L2	L3	L4	L5
h-NS 125	94	124	25	32	160	164	210	38	55	37	90	90	208	150	48	10	36	18
h-NS 160	118	156	35	44	200	204	264	48	70	48	115	116	235	170	55	10	46	23
h-NS 200	122	162	35	44	250	254	314	48	80	52	135	135	257	180	65	12	46	23
h-NS 250	150	200	40	64	320	324	400	62	100	67	165	169	289	200	75	14	50	25
h-NS 320	170	234	50	73	400	404	500	68	120	73	200	201	326	220	90	16	56	28

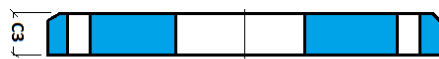
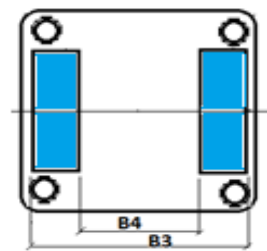
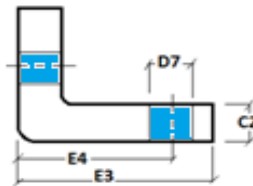
	L6	L7	L8	L9	L10	L11	L12	R1	R2	SW
h-NS 125	375	45	245	275	250	270	125	30	22,5	27
h-NS 160	459	60	280	315	300	320	155	32	31,5	41
h-NS 200	479	70	300	335	320	345	165	35	31,5	41
h-NS 250	543	80	330	375	350	380	186	45	40	46
h-NS 320	612	90	370	420	390	425	210	54	45	50

AYAK BAĞ

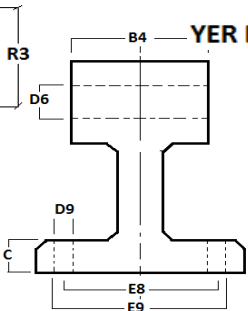
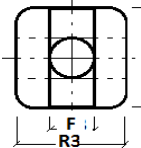
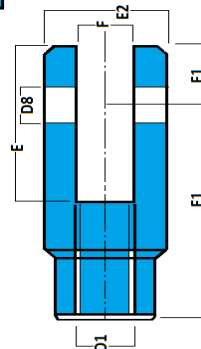
ARKA EKLEM BAĞ



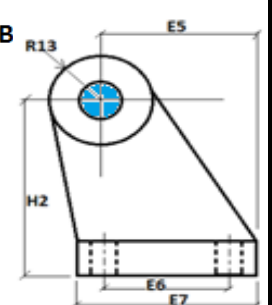
ÖN FLANŞ BAĞ



ÇATAL BAĞ



YER B



İTME KUVVETİ Kg)

